



Department of Public Works
Engineering Division
 Robert F. Phillips, P.E., City Engineer
 City-County Building, Room 115
 210 Martin Luther King, Jr. Boulevard
 Madison, Wisconsin 53703
 Phone: (608) 266-4751
 Fax: (608) 264-9275
engineering@cityofmadison.com
www.cityofmadison.com/engineering

Deputy City Engineer
 Gregory T. Fries, P.E.
Deputy Division Manager
 Kathleen M. Cryan
Principal Engineer 2
 Christopher J. Petykowski, P.E.
 John S. Fahrney, P.E.
 Janet Schmidt, P.E.
Principal Engineer 1
 Christina M. Bachmann, P.E.
 Mark D. Moder, P.E.
 James M. Wolfe, P.E.
Facilities & Sustainability
 Bryan Cooper, Principal Architect
Mapping Section Manager
 Eric T. Pederson, P.S.
Financial Manager
 Steven B. Danner-Rivers

June 19, 2020

**NOTICE OF ADDENDUM
 ADDENDUM NO. 1
 CONTRACT NO. 8920
 ALLIS / SPAANEM / SHAFFER WATER MAIN**

Revise and amend the contract document(s) for the above project as stated in this addendum, otherwise, the original document shall remain in effect.

PLANS:

REPLACE SHEETS: W-1 through W-6, W-8

ESTIMATE:

ADD BID ITEM:

70090	ABANDON WATER VALVE BOX	1	EACH
-------	-------------------------	---	------

The Bid Submission Deadline (Date and Time) has NOT been modified.

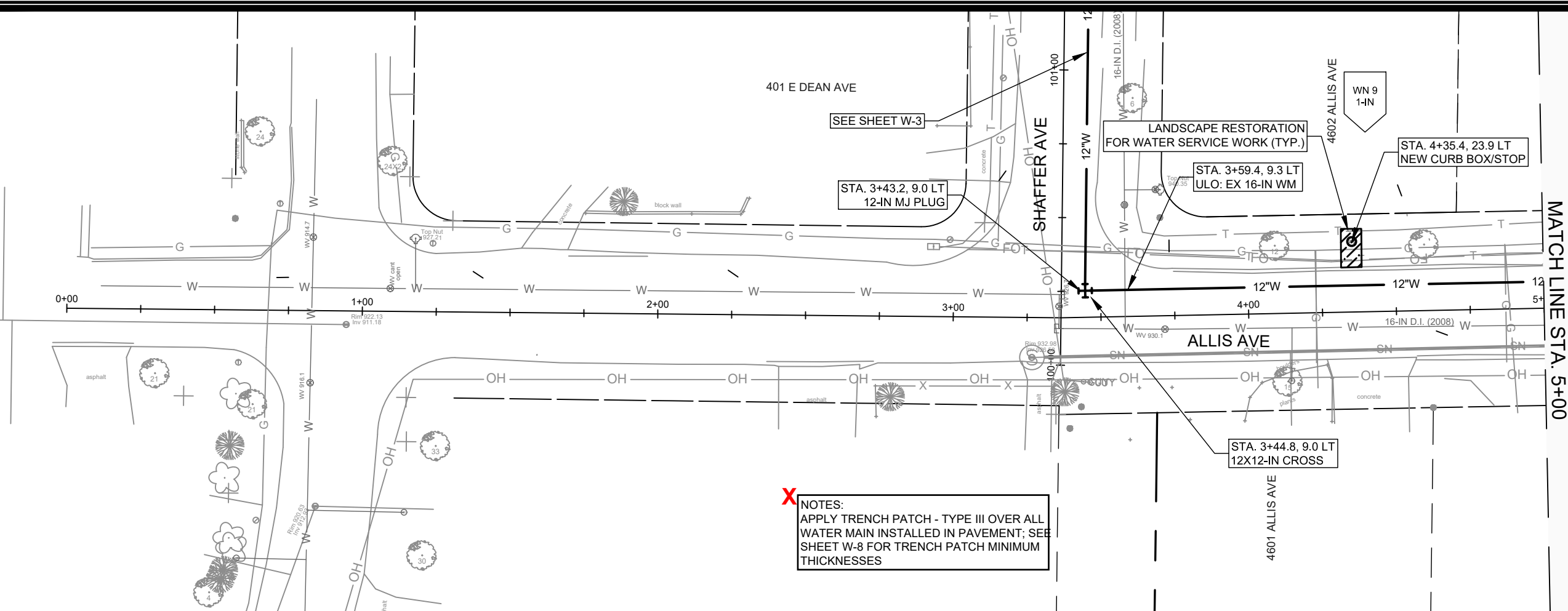
Please acknowledge this addendum on page E1 of the contract documents and/or in Section E: Bidder's Acknowledgement on Bid Express.

Electronic version of these documents can be found on the Bid Express web site at:
<http://www.bidexpress.com>

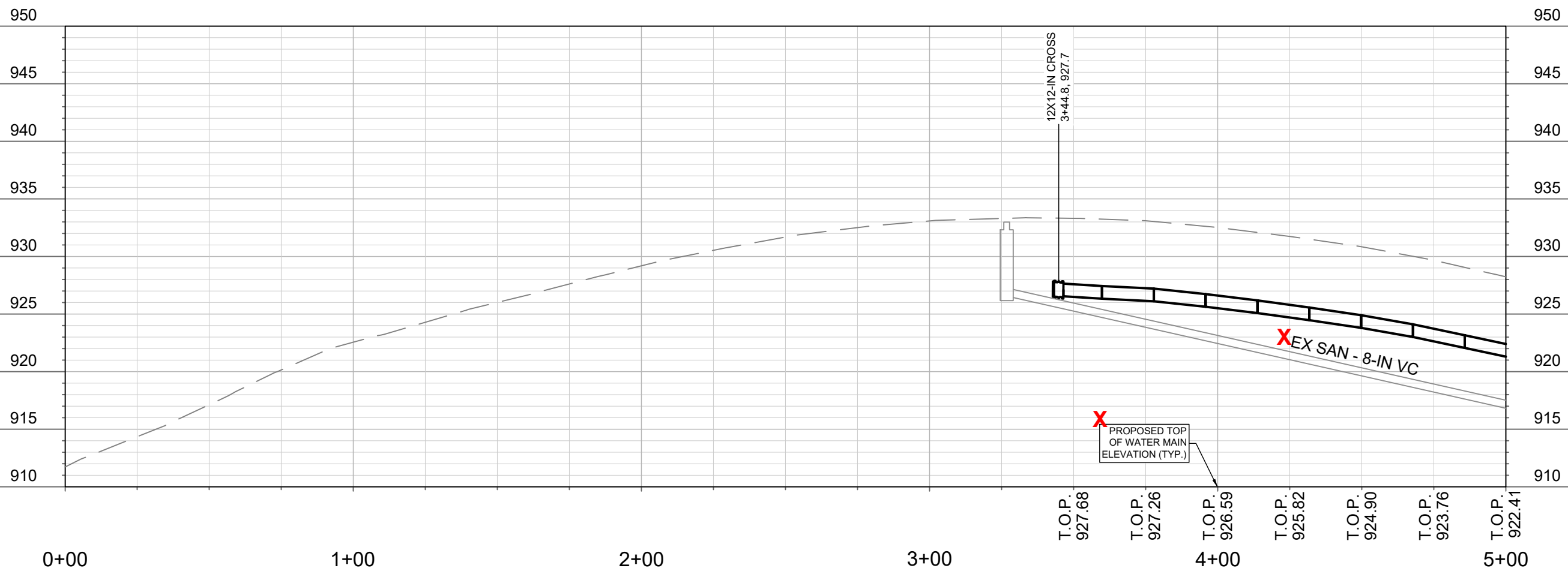
If you are unable to download plan revisions associated with the addendum, please contact the Engineering office at 608-266-4751 receive the material by another route.

Sincerely,

Alan L. Larson, PE, BCEE
 Chief Engineer and Assistant GM
 Madison Water Utility



X NOTES:
 APPLY TRENCH PATCH - TYPE III OVER ALL
 WATER MAIN INSTALLED IN PAVEMENT; SEE
 SHEET W-8 FOR TRENCH PATCH MINIMUM
 THICKNESSES



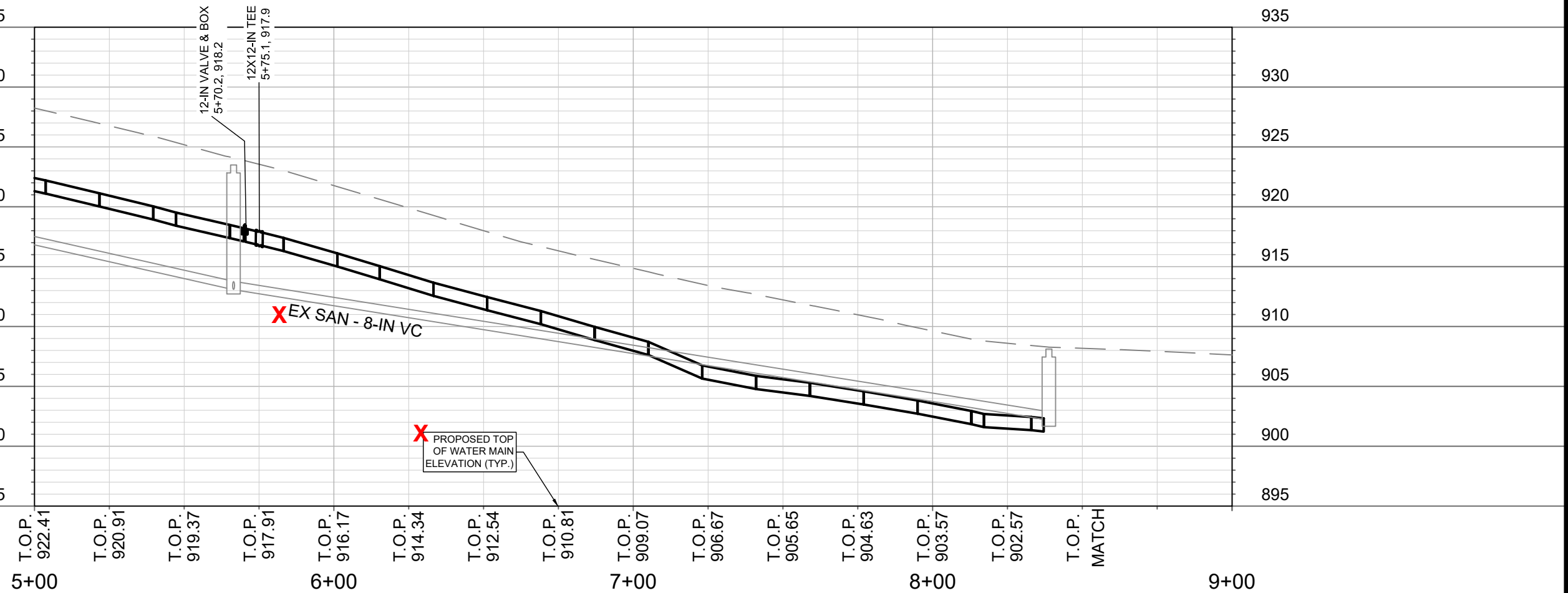
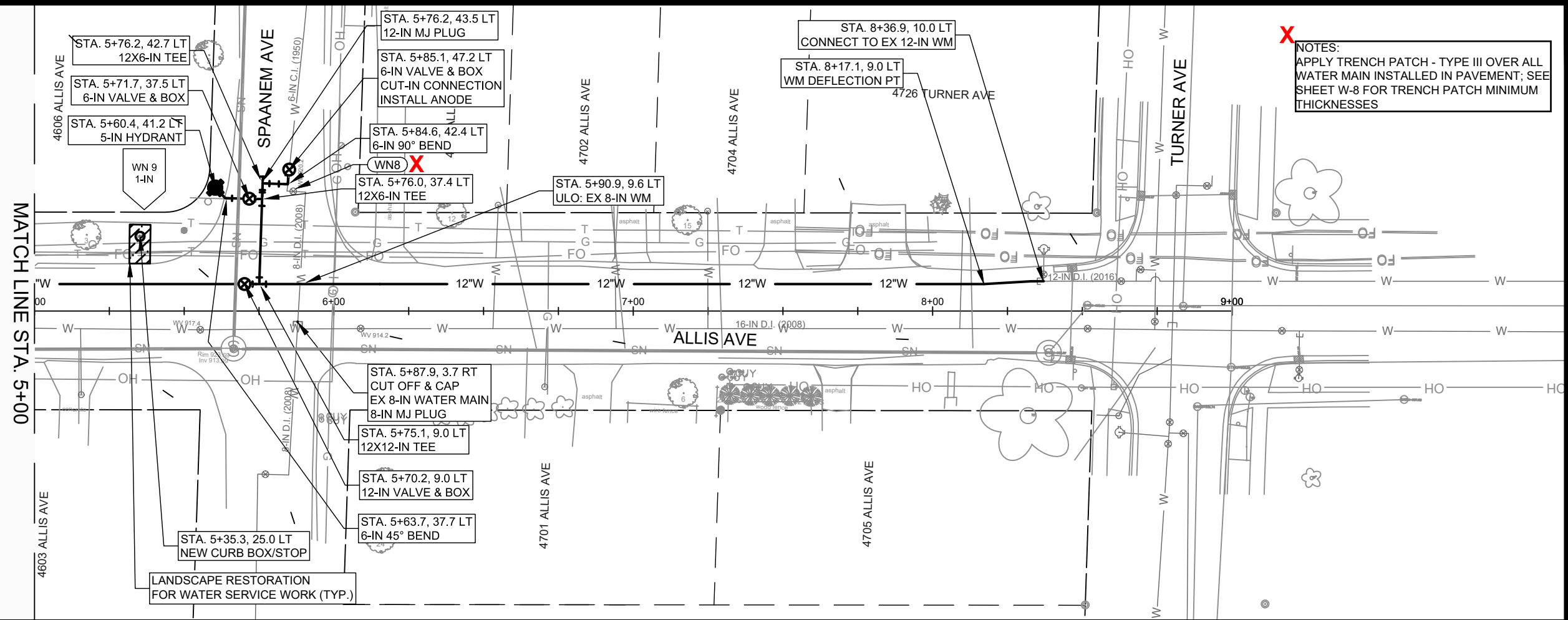
MARK	REVISION	DATE	BY
X	ADDENDUM 1	06.19.20	PEH

Designed By: PEH Date: 6/19/2020 10:35 AM Scale: 1" = 40'

12999
 MADISON, WI
 CONTRACT NO: 8920

ALLIS AVENUE
 ALLIS / SPAANEM / SHAFFER WATER MAIN
 M:\DESIGN\Projects\12999\C3D\Water\12999WU-Water.dwg

12999
 W-1

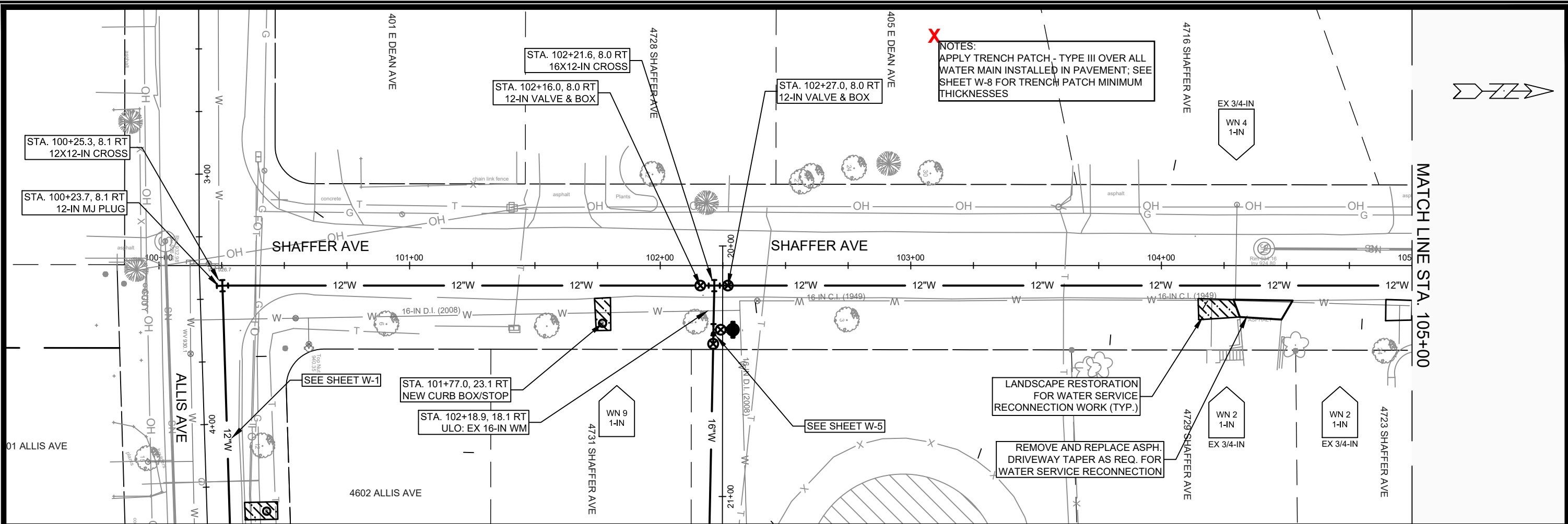


12999
 MADISON, WI
 CONTRACT NO: 8920

ALLIS AVENUE
 ALLIS / SPAANEM / SHAFFER WATER MAIN
 M:\DESIGN\Projects\12999\C3DWater\12999WU-Water.dwg



12999
 W-2



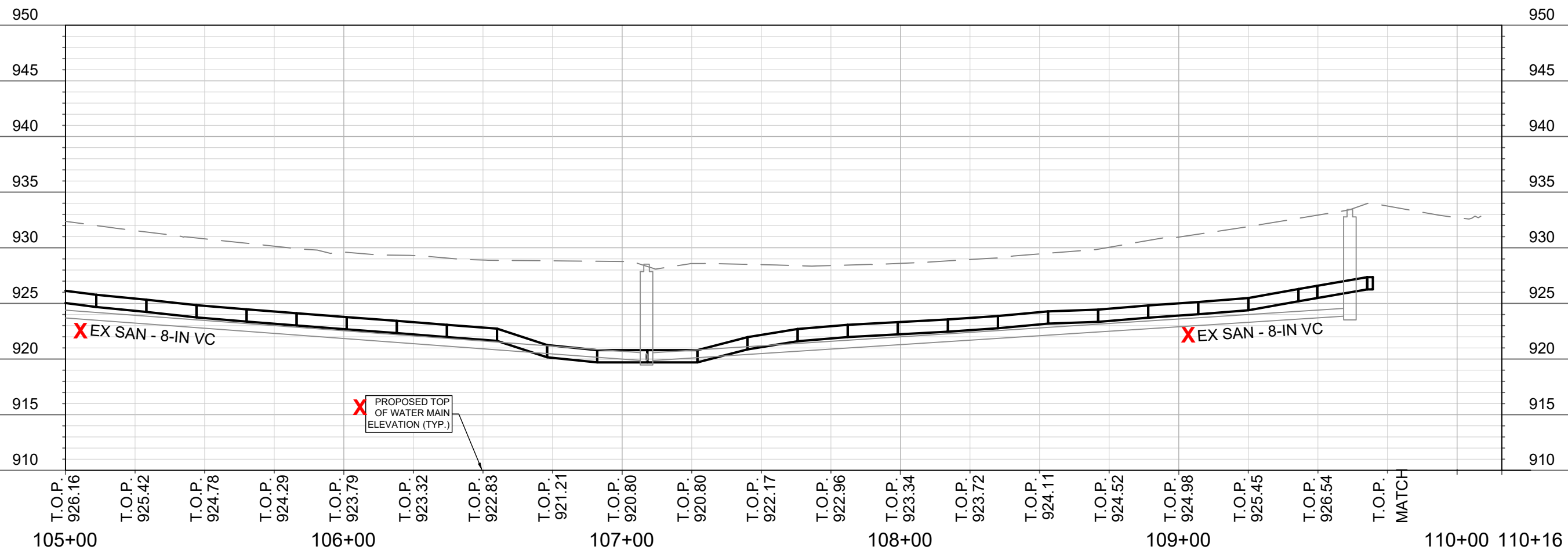
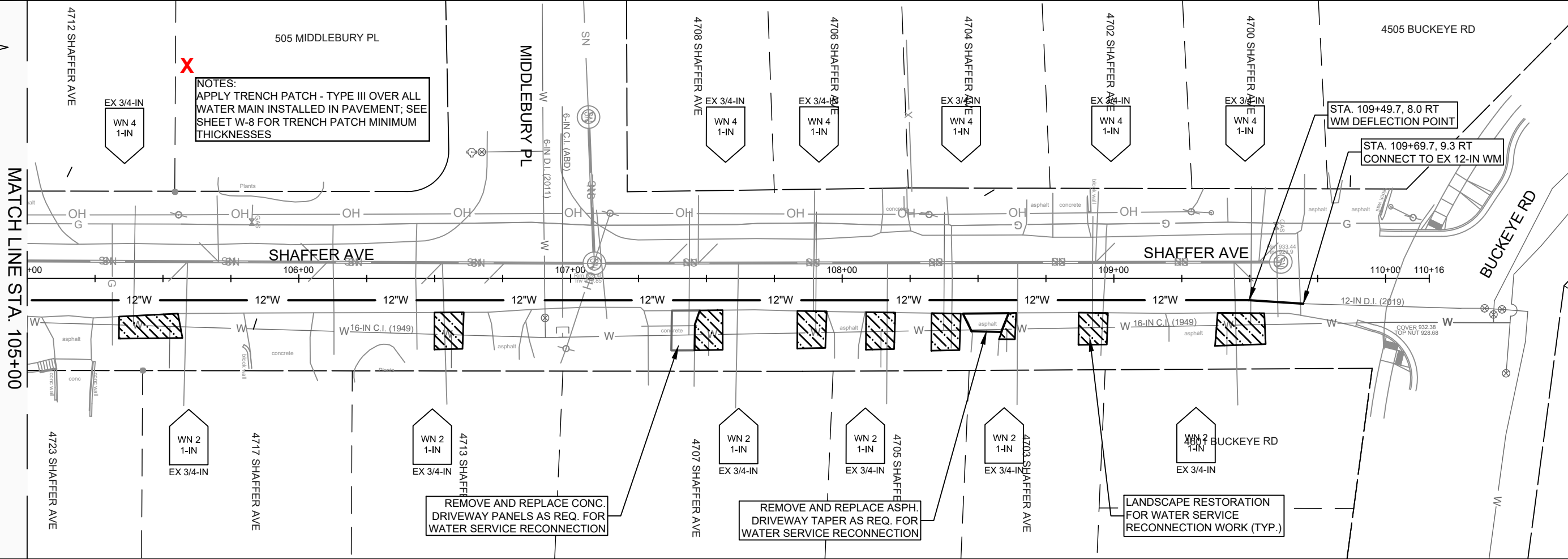
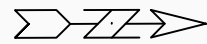
DATE	BY
06.19.20	PEH
REVISION	
ADDENDUM 1	
DESIGNED BY	PEH
DATE	06/19/2020 10:36 AM
SCALE	1" = 40'
MARK	
12999	
W-3	

12999
 MADISON, WI
 8920
 CONTRACT NO:

SHAFER AVENUE
 ALLIS / SPAANEM / SHAFER WATER MAIN
 M:\DESIGN\Projects\12999\C3DWater\12999WU-Water.dwg



12999
 W-3

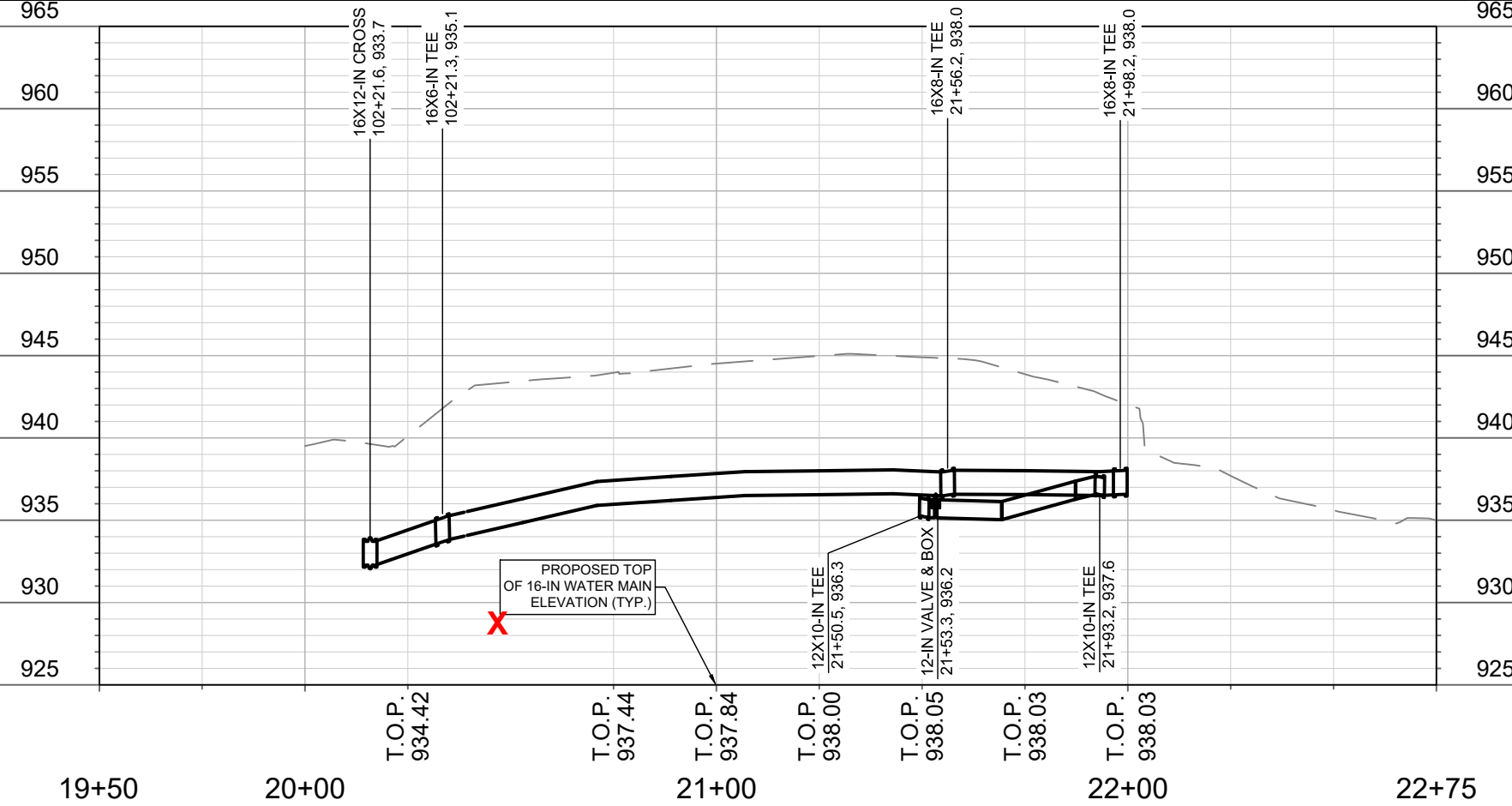
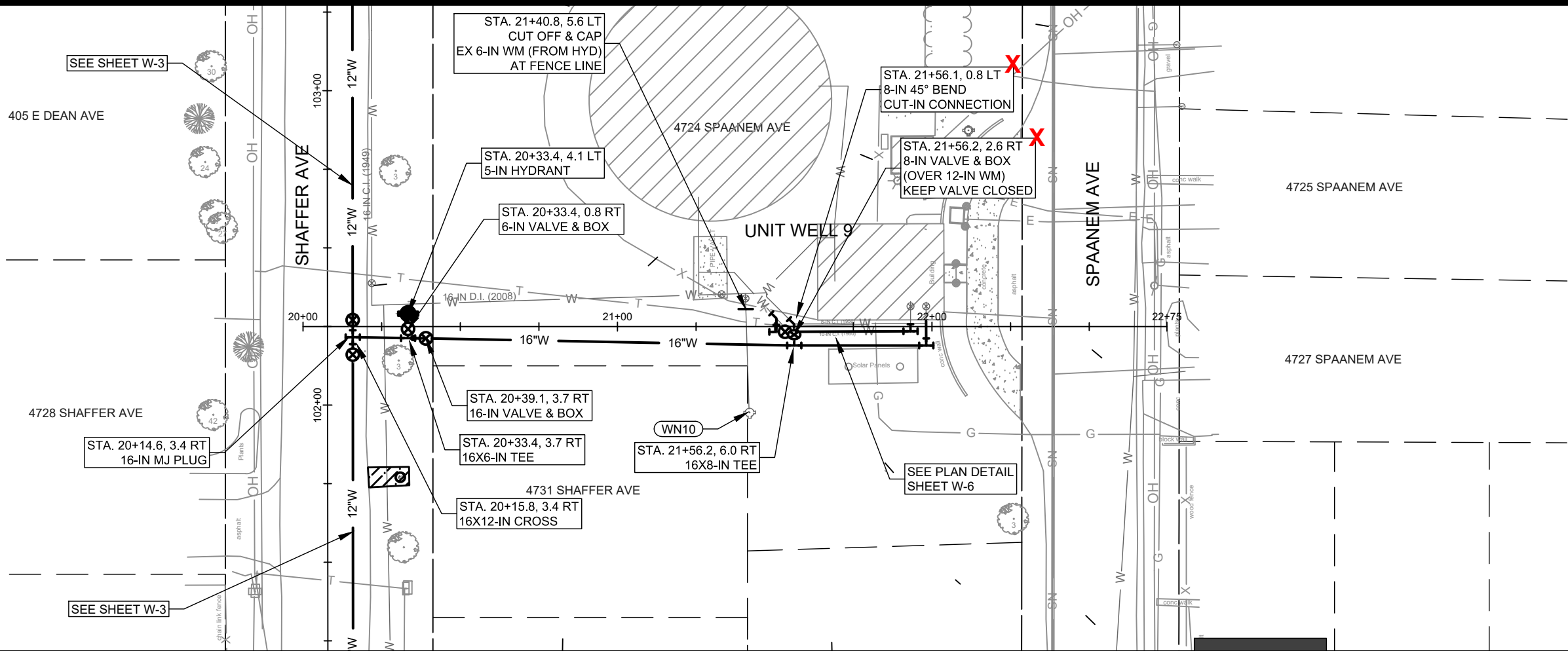


DATE	06.16.20	BY	PEH
REVISION	ADDENDUM 1	DATE	06.16.20
DESIGNED BY	PEH	DATE	06/19/2020 10:36 AM
MARK	X	SCALE	1" = 40'
12999			

12999
MADISON, WI
CONTRACT NO: 8920

SHAFER AVENUE
ALLIS / SPAANEM / SHAFER WATER MAIN
M:\DESIGN\Projects\12999\C3D\Water\12999WU-Water.dwg

12999
W-4



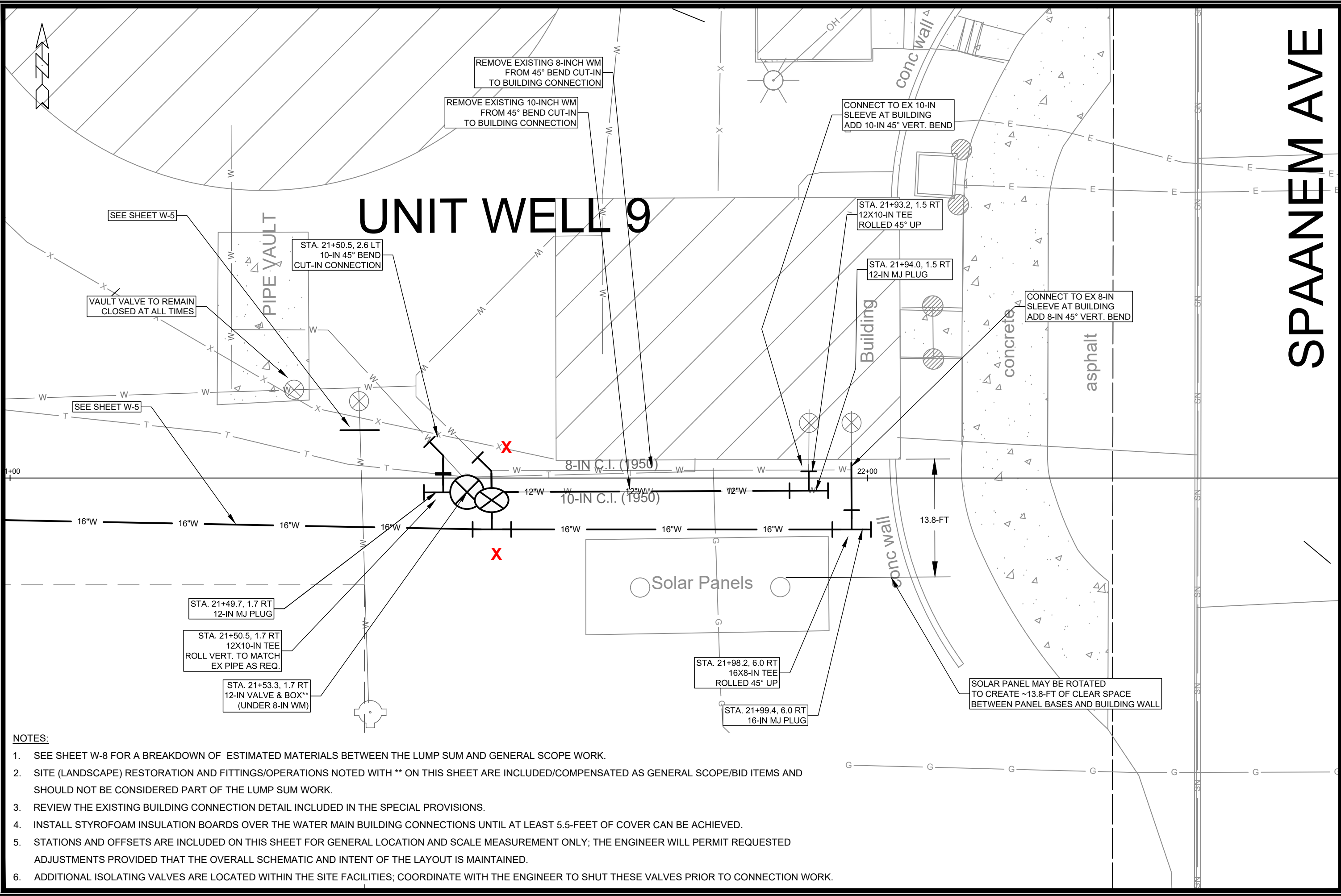
DATE	06.19.20	BY	PEH
REVISION	ADDENDUM 1	DATE	06/19/2020 10:36 AM
MARK	X	DESIGNED BY	PEH
12999		SCALE	1" = 40'
W-5			

12999
MADISON, WI
8920
CONTRACT NO:

WELL 9 SITE
ALLIS / SPAANEM / SHAFFER WATER MAIN
M:\DESIGN\Projects\12999\C3DWater\12999WU-Water.dwg



12999
W-5



- NOTES:**
- SEE SHEET W-8 FOR A BREAKDOWN OF ESTIMATED MATERIALS BETWEEN THE LUMP SUM AND GENERAL SCOPE WORK.
 - SITE (LANDSCAPE) RESTORATION AND FITTINGS/OPERATIONS NOTED WITH ** ON THIS SHEET ARE INCLUDED/COMPENSATED AS GENERAL SCOPE/BID ITEMS AND SHOULD NOT BE CONSIDERED PART OF THE LUMP SUM WORK.
 - REVIEW THE EXISTING BUILDING CONNECTION DETAIL INCLUDED IN THE SPECIAL PROVISIONS.
 - INSTALL STYROFOAM INSULATION BOARDS OVER THE WATER MAIN BUILDING CONNECTIONS UNTIL AT LEAST 5.5- FEET OF COVER CAN BE ACHIEVED.
 - STATIONS AND OFFSETS ARE INCLUDED ON THIS SHEET FOR GENERAL LOCATION AND SCALE MEASUREMENT ONLY; THE ENGINEER WILL PERMIT REQUESTED ADJUSTMENTS PROVIDED THAT THE OVERALL SCHEMATIC AND INTENT OF THE LAYOUT IS MAINTAINED.
 - ADDITIONAL ISOLATING VALVES ARE LOCATED WITHIN THE SITE FACILITIES; COORDINATE WITH THE ENGINEER TO SHUT THESE VALVES PRIOR TO CONNECTION WORK.

SPANANEM AVE

DATE	BY
06.19.20	PEH
REVISION	
ADDENDUM 1	
DESIGNED BY	PEH
DATE	06/19/2020 10:36 AM
SCALE	1" = 20'
MARK	
12999	
W-6	

12999
MADISON, WI
8920
CONTRACT NO:

WELL 9 SITE - PLAN DETAIL
ALLIS / SPAANEM / SHAFFER WATER MAIN
M:\DESIGN\Projects\12999\C3D\Water\12999WU-Water.dwg

12999
W-6

ESTIMATE OF NEW WATER MATERIALS*

RIGHT OF WAY AND WELL 9 SITE ACCESS WORK			WELL 9 SITE - LUMP SUM WORK (SHEET W-6)		
DESCRIPTION	QUANTITY	UNIT	DESCRIPTION	QUANTITY	UNIT
6-INCH PIPE	50	LNFT	8-INCH PIPE	<20	LNFT
12-INCH PIPE	1500	LNFT	10-INCH PIPE	<10	LNFT
16-INCH PIPE	150	LNFT	12-INCH PIPE	40	LNFT
6-INCH WATER VALVE	3	EACH	16-INCH PIPE	40	LNFT
8-INCH WATER VALVE	1	EACH	12-IN MJ PLUG	2	EACH
12-INCH WATER VALVE	4	EACH	16-IN MJ PLUG	1	EACH
16-INCH WATER VALVE	1	EACH	8-IN 45° BEND	2	EACH
5-IN HYDRANT	2	EACH	10-IN 45° BEND	2	EACH
ANODE	1	EACH	12X10-IN TEE	2	EACH
6-IN MJ CAP	1	EACH	16X8-IN TEE	2	EACH
8-IN MJ PLUG	1	EACH	INSULATION BOARDS	32	LNFT
12-IN MJ PLUG	4	EACH			
16-IN MJ PLUG	1	EACH			
12X12-IN CROSS	1	EACH			
16X12-IN CROSS	1	EACH			
6-IN 90° BEND	1	EACH			
6-IN 45° BEND	1	EACH			
12X6-IN TEE	3	EACH			
12X12-IN TEE	1	EACH			
16X6-IN TEE	1	EACH			
1-INCH COPPER FOR SVC	AS REQ.	LNFT			

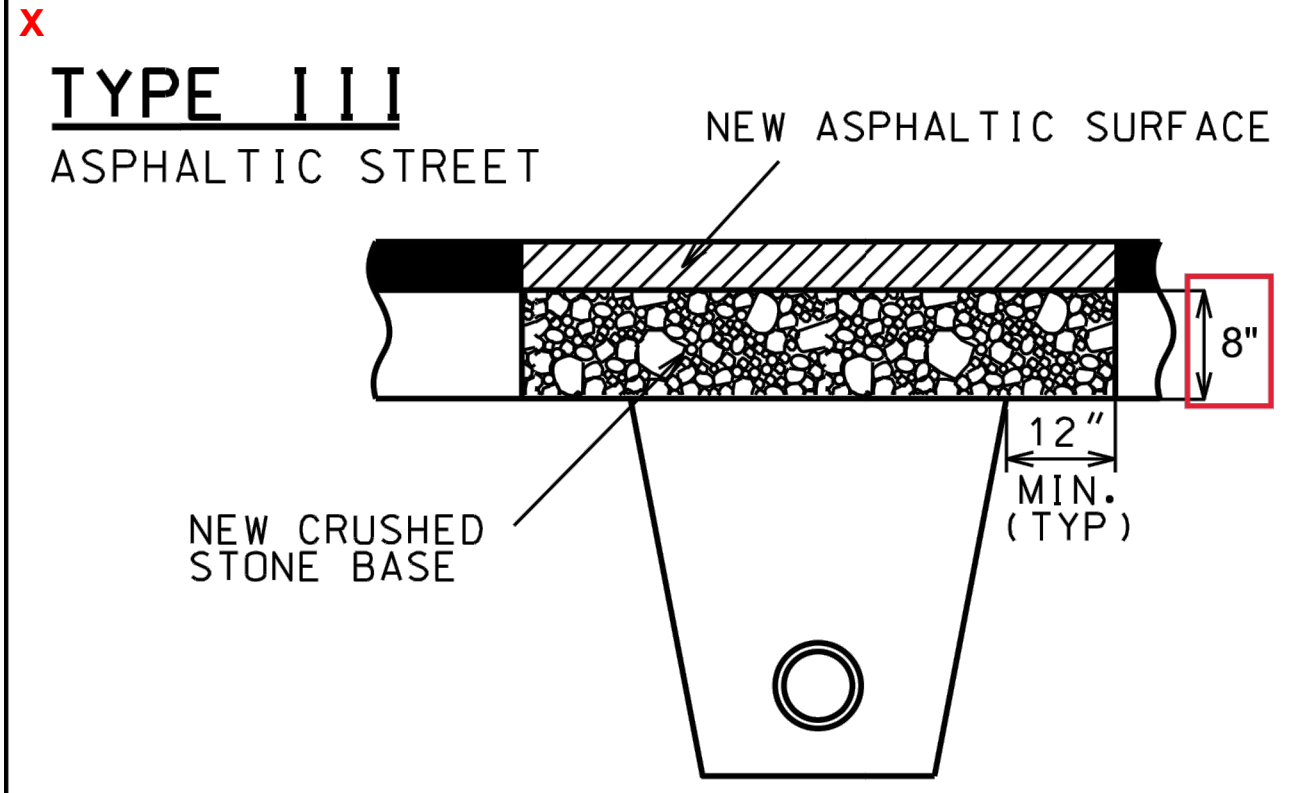
* ESTIMATES OF MATERIALS ARE FOR INFORMATION ONLY. ENGINEER DOES NOT GUARANTEE ACCURACY OF MATERIAL TAKE-OFF.

CONSTRUCTION NOTES:

- WN1 REPLACE THE EXISTING LEAD SERVICE WITH A NEW COPPER SERVICE.
- WN-2 EXTEND AND RECONNECT THE EXISTING COPPER SERVICE TO THE NEW WATER MAIN.
- WN-3 EXISTING SERVICE TO BE ABANDONED WHEN THE WATER MAIN IS CUT OFF.
- WN-4 DISCONNECT FROM THE EXISTING WATER MAIN AND RECONNECT THE EXISTING COPPER WATER SERVICE LATERAL TO THE NEW WATER MAIN.
- WN-5 RELOCATE THE EXISTING FIRE HYDRANT.
- WN-6 ABANDON WATER VALVE ACCESS STRUCTURE.
- WN-7 FURNISH AND INSTALL THE NEW TOP SECTION FOR THE WATER ACCESS STRUCTURE.
- WN-8 ABANDON THE VALVE BOX.
- WN-9 FURNISH THE DITCH, COMPACTION, AND ALL MATERIALS AND LABOR FOR THE INSTALLATION OF NEW SERVICE LATERAL.
- WN-10 REMOVE AND SALVAGE EXISTING HYDRANT
- WN-11 REPLACE THE EXISTING COPPER SERVICE WITH A COPPER SERVICE
- WN-20+ SEE WATER IMPACT PLAN FOR CONNECTION POINT ISOLATION AND WATER SHUT-OFF NOTIFICATION INFORMATION.

WATER UTILITY ULO SCHEDULE

ULO	UTILITY	STATION	OFFSET	SHEET
#1	WATER	3+59	9.3'LT	W-1
#2	WATER	5+91	9.6'LT	W-2
#3	WATER	102+19	18.1'RT	W-3



TYPE III UTILITY TRENCH PATCH

THE PATCH SHALL BE CRUSHED STONE BASE COURSE, GRADATION NO. 2 OVERLAID WITH ASPHALT UPPER LAYER EQUAL IN THICKNESS TO THE EXISTING ASPHALTIC PAVEMENT, WITH A MINIMUM THICKNESS OF:

Allis Avenue:	2.5-inch asphaltic base
Spaanem Avenue:	2.5-inch asphaltic base
Shaffer Avenue:	3.0-inch asphaltic base

THE PAVEMENT ALONG THE PATCH SHALL BE SAWCUT, FULL DEPTH, AND INCIDENTAL TO THE TRENCH PATCH. THE EDGES OF THE EXISTING ASPHALTIC PAVEMENT SHALL BE FREE OF LOOSE STONES OR PAVEMENT MATERIAL.

THE CRUSED STONE BASE COURSE SHALL BE INSTALLED IN TWO LIFTS. THE LOWER LIFT SHALL BE THOROUGHLY MECHANICALLY COMPACTED PRIOR TO PLACING THE UPPER LIFT.

THE ASPHALT UPPER LAYER SHALL BE LAID IN TWO LIFTS. THE ASPHALT UPPER LAYER SHALL BE MACHINE LAID WHERE DIRECTED BY THE ENGINEER. WHERE THE ASPHALTIC UPPER LAYER IS MACHINE LAID AND IS NOT MORE THAN 3" IN THICKNESS, THE ASPHALT SURFACE COURSE MAY BE IN ONE LIFT.

PRIOR TO PLACING THE ASPHALT UPPER LAYER, THE EDGES OF THE PATCH AND THE SURFACE OF THE CRUSED STONE BASE SHALL BE TACKED AND PRIMED WITH LIQUID ASPHALT.

DATE BY: 06.19.20 PEH
REVISION: ADDENDUM 1
MARK: X

SCALE: N/A
DESIGNED BY: PEH
MADISON WATER UTILITY
119 E OLIN AVE, MADISON, WI 53713
PRINTING DATE: 6/19/20

CONTRACT NO: 8920

ALLIS / SPAANEM / SHAFFER WATER MAIN
WATER ESTIMATE OF MATERIALS
CITY OF MADISON, WISCONSIN



12999
W-8